

Appendix I: Topics discussed with beneficiaries of resettlement

Situation before resettlement:

- Previous occupation
- Experience in agriculture
- Living conditions and place before resettlement

Resettlement:

- Reasons for starting application for resettlement
- How did application for resettlement take place
- Family size, entire families settled?
- Were beneficiaries happy with their new farmer existence?

After resettlement:

- Self-sufficient food production, trade?
- Development of farming conditions (infrastructure, animal hazards)
- Government support
- Co-operation with other settler families
- Future expectations

Land Redistribution and Agricultural Potential (AEZ's)

Data Supplied By:



Ministry of Agriculture, Water and Rural Development

Client:



Namibian Agricultural Union

Map Produced by:



Huvest Building, 1st floor
Sam Nujoma Drive, Klein Windhoek, Namibia
E-mail: sds@sde.com.na
Tel: (09264) 220 552 Fax: (09264) 240 309

Date: April 2003

Revisions:

Drawing No.

Scale 1:5 000 000

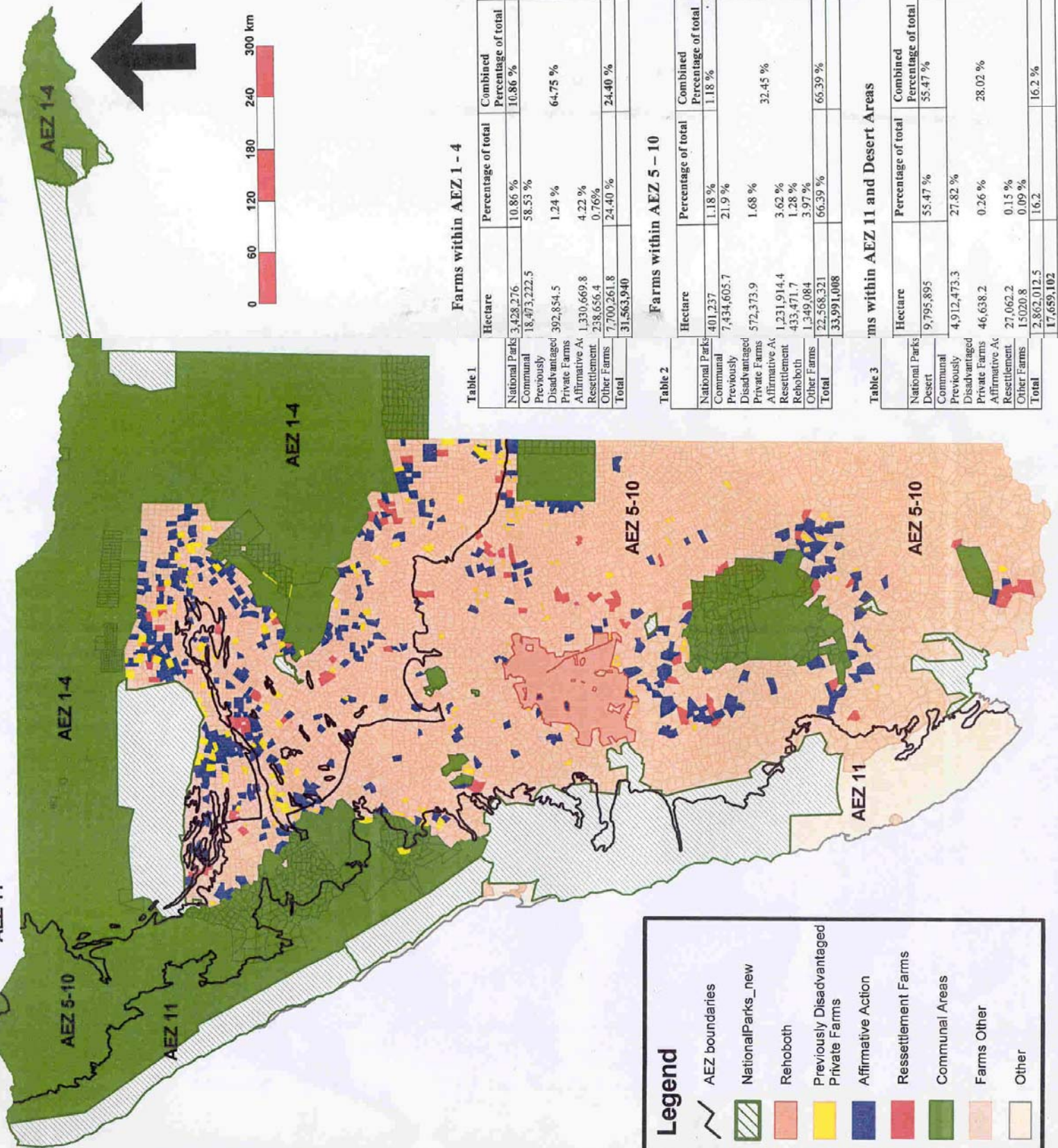


Table 1 Farms within AEZ 1 - 4

	Hectare	Percentage of total	Combined Percentage of total
National Parks	3,428,276	10.86 %	10.86 %
Communal	18,473,222.5	58.53 %	
Previously Disadvantaged Private Farms	392,854.5	1.24 %	64.75 %
Affirmative Action Resettlement	1,330,669.8	4.22 %	
Other Farms	238,656.4	0.769 %	
Total	7,700,261.8	24.40 %	24.40 %

Table 2 Farms within AEZ 5 - 10

	Hectare	Percentage of total	Combined Percentage of total
National Parks	401,237	1.18 %	1.18 %
Communal	7,434,605.7	21.9 %	
Previously Disadvantaged Private Farms	572,373.9	1.68 %	32.45 %
Affirmative Action Resettlement	1,231,914.4	3.62 %	
Rehoboth	433,471.7	1.28 %	
Other Farms	1,349,084	3.97 %	
Total	22,568,321	66.39 %	66.39 %

Table 3 Farms within AEZ 11 and Desert Areas

	Hectare	Percentage of total	Combined Percentage of total
National Parks	9,795,895	55.47 %	55.47 %
Desert	4,912,473.3	27.82 %	
Communal	46,638.2	0.26 %	28.02 %
Previously Disadvantaged Private Farms	27,062.2	0.15 %	
Affirmative Action Resettlement	15020.8	0.09 %	
Other Farms	2,862,012.5	16.2 %	16.2 %
Total	17,659,102		